

A Premier Location and Two Key Assets with Historically Significant Drill Results

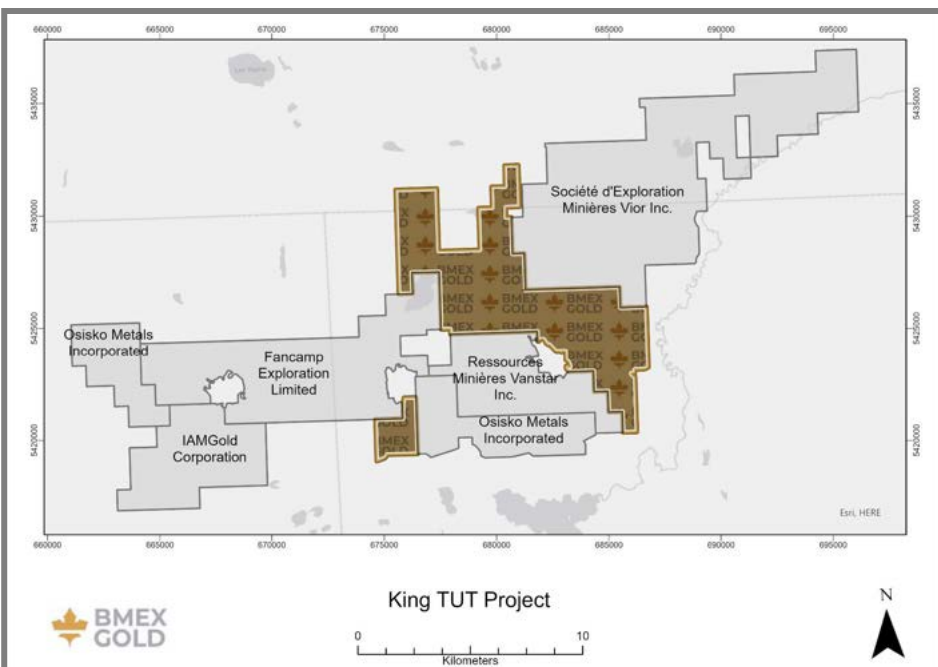
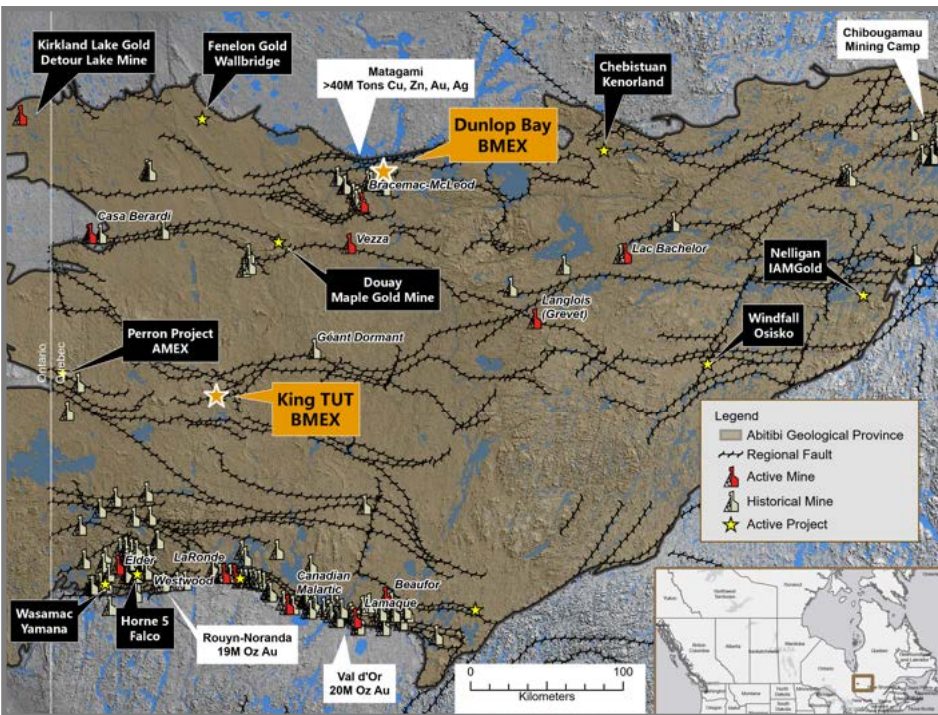
Canada is one of the largest and most favourable mining nations in the world. BMEX Gold is positioned in a favourable jurisdiction for mine permitting and development; with two key assets over 9,800 hectares with historically significant drill results. The Dunlop Bay property has 76 contiguous mineral claims that cover 4,226 hectares, and the King Tut property has 120 contiguous mineral claims that cover 5,206 hectares.

As one of the best positioned junior exploration companies in Quebec, BMEX Gold has an experienced management team, AMEX Explorations expertise in the region and key permits filed.

Two Key Assets

120 mineral claims that cover 5,206 hectares King Tut Property

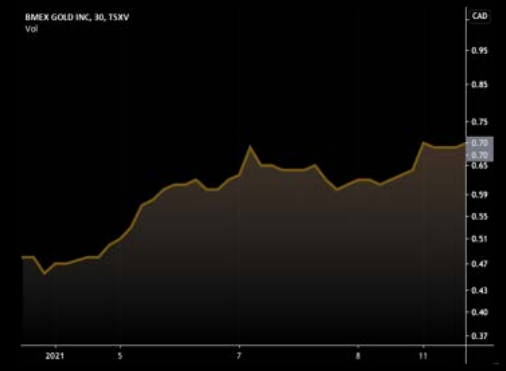
Located in Abitibi Gold Belt, a region of Canada that extends from Wawa, Ontario to Val-d'Or, Quebec. An established gold mining district having produced over 100 mines, and 170 million ounces of gold since 1901. The property is 65KM's East of Amex Exploration's Perron property. IAMGOLD's Property is 5KM's West of King Tut and to the East is Vior/ Ethos with its Ligneris Project showing high grade gold.



The BMEX Team

Warner Uhl	President, CEO & Director
Chris Wild	Chief Geologist
Mickey Goldstein	CPA, CFO
Dylan Sidoo	Business Development
Alicia Milne	Corporate Secretary
Peter Espig	Director
Verlee Webb	Director
R. Marc Bustin (Ph.D., P. Geol., FRSC)	Director

Key Financials (January 2021)



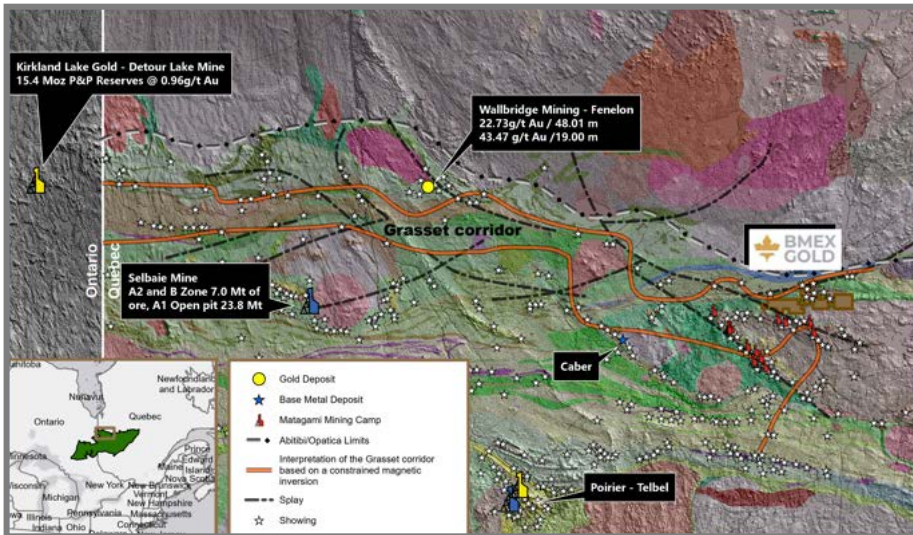
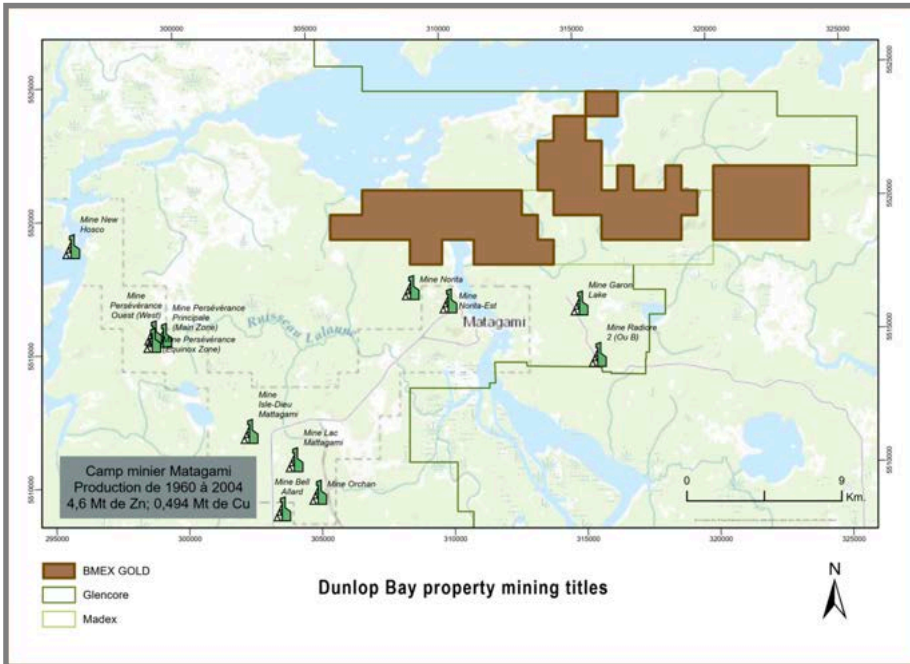
Share Price	0.60
Options	2,325,000
Warrants	13,681,000
Fully Diluted Shares	59,870,000
Cash	4,700,000
Market Cap	30,680,000



BMEX Gold Inc.
999 West Hastings St.
Vancouver, British Columbia Canada
V6E 3V7
www.bmexgold.com

**76 mineral claims that cover 4,226 hectares
Dunlop Bay Property**

The Property is located immediately north of the Matagami Gold and Base Metals District, 15 km north-east from Glencore's Matagami Lake Mine Plant, processing zinc, copper, silver and gold material from the Bracemac-McLeod Mine. Over 60 gold bearing veins and veinlets have been located (by Minière du Nord) in the central part of the property since 1956².



News Release Highlights

- 6/1/21** BMEX Gold Provides Year End Update for 2020
- 18/11/20** BMEX Strengthens Its Geological Team with the Addition of Kelly Malcolm as Special Advisor and Provides Drilling Update
- 11/11/20** BMEX Gold Provides Drill Program Update and Adds Victor Cantore as Special Advisor to the Board
- 27/10/20** BMEX Launches Initial Drill Program on King Tut Property

Investment Highlight's

- Strategically Located
- Resources Accessible by Existing Infrastructure
- Large Undeveloped Resources
- Secure Location With Good Infrastructure
- Supportive Government Reforms ("Plan Nord") & Tax Reductions
- Many Producing Mines Nearby